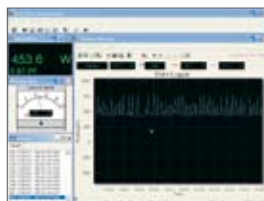




Solicita información
91 366 00 63



Power clamp meter MD 9240

Order No. 20 991 446

The MD 9240 is a high-quality and extremely easy to handle power clamp meter. The current clamp enables TRMS AC current measurement up to 1000 A, single-phase power analysis, DC, AC voltage measurement, temperature measurement and more. As a result, the current clamp is suitable for maintenance and checking of distribution systems, switchboards and motors, or in systems where the supply network is heavily contaminated with harmonics.

Test functions:

- DC and TRMS AC voltage up to 600 V
- TRMS AC current measurement up to 1000 A
- Resistance measurement
- Continuity test
- Frequency measurement
- Contact temperature measurement
- Power factor
- Power (W, VA, Var)

Key Features:

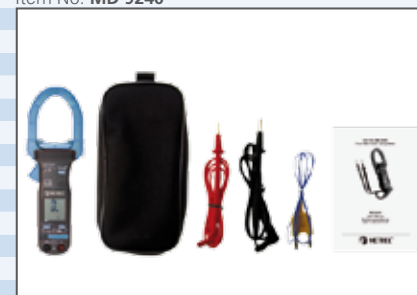
- Auto-ranging on all ranges
- LCD display with backlight, 3-3/4 digit, 6000 count
- Peak-hold function
- Acoustic signalling on continuity test
- 45 mm jaw opening
- Single-phase power analysis
- Resistance measurement up to 999.9 Ω
- Temperature measurement
- COM port
- Optional PC software
- Protected against wrong connection
- CAT III/600 V overvoltage category

Technical data

Function	Range	Accuracy
DC voltage	600.0 V	±(0.5 % of reading + 5 digits)
AC voltage , 50 Hz ÷ 60 Hz, 45 Hz ÷ 500 Hz, 500 Hz ÷ 3.1 kHz	600.0 V, 600.0 V, 600.0 V	±(0.5 % + 5 digits, 1.5 % + 5 digits, 2.5 % + 4 digits) of reading
AC current measurement, 50,60 Hz	40.00 A, 400.0 A, 1000 A	±(1.0 % of reading + 5 digits)
45 Hz ÷ 500 Hz	40.00 A, 400.0 A, 1000 A	from ±(2.0 % of reading + 5 digits) to ±(2.5 % of reading + 5 digits)
500 Hz ÷ 3.1 kHz	40.00 A, 400.0 A, 1000 A	from ±(2.5 % of reading + 5 digits) to ±(3 % of reading + 5 digits)
Temperature	-50 °C ÷ 300 °C	±(3 % of reading + 3 °C)
Resistance measurement	999.9 Ω	±(1 % of reading + 6 digits)
Continuity test	10 ÷ 300 Ω	
Frequency	5 Hz ÷ 500 Hz	±(0.5 % of reading + 4 digits)
Power factor (PF)	0.10 ÷ 0.99	±3 digits (H from 1. to 21.), ±5 digits (H from 22. to 51.)
Apparent power	0 ÷ 600.0 kVA	±(2 % + 6 digits, 3.5 % + 6 digits, 5.5 % + 6 digits) of reading (H 10/11., 46/47., 51.)
Active power, reactive power	0 ÷ 600.0 kW, kVar	±(3.5 % of reading + 6 digits) (H from 11. to 25.)
Power supply	2 x 1.5 V AAA size batteries	
Overvoltage category	CAT III/600 V	
Pollution degree	2	

Delivery package

Item No. MD 9240



Power clamp meter MD 9240

2 test leads

Type K temperature sensor

Battery

Pouch

User manual

Warranty

Optional accessories:

AMD 9240 - PC interface kit

(including Optical Adapter Back, Cable & Software CD)

AMD 9023 - Temperature probe Type K

(in accordance with IST-90 and JIS C 1602)

AMD 9024 - plug adapter banana pins to k-type socket

Dimensions:

Size (W x H x L): 78 x 40 x 224 mm

Weight: 224 g

Current clamp comparison

Item No.	MD 9210	MD 9220	MD 9230	MD 9240
				
Technical data				
True RMS		✓	✓	✓
DC current range (A)			0.1 A ÷ 1000 A	
Basic accuracy (%)			1.5	
AC current range (A)	0.01 A ÷ 600 A	0.1 A ÷ 2000 A	0.1 A ÷ 800 A	0.01 A ÷ 1000 A
Basic accuracy (%)	1.5	1.5	1.5	1
DC voltage range (V)	0.1 mV ÷ 600 V	1 mV ÷ 600 V	0.1 mV ÷ 600 V	0.1 V ÷ 600.0 V
Basic accuracy (%)	0.3	0.5	0.3	0.5
AC voltage (V)	1 mV ÷ 600 V	1 mV ÷ 600 V	0.1 mV ÷ 600 V	0.1 V ÷ 600.0 V
Basic accuracy (%)	1.5	1.5	1	0.5
Resistance measurement	0.1 Ω ÷ 40.00 MΩ	0.1 Ω ÷ 6.000 MΩ	0.1 Ω ÷ 40.00 MΩ	0.1 Ω ÷ 999.9 Ω
Basic accuracy (%)	0.6	1	0.6	1
Acoustic continuity test	✓	✓	✓	✓
Diode test	✓	✓	✓	
Capacitance	✓	✓	✓	
Mains frequency	✓	✓		✓
Temperature measurement (Type K sensor)				✓
Autocheck® V-Ω		✓		Auto V-A
Power measurement (W, VA & VAR)				Single-phase
Count	4000	6000	4000	6000
Backlight		✓		✓
COM port (data transfer)				✓
Automatic and manual range selection	✓	✓	✓	
Automatic switch off	✓	✓	✓	✓
Non-contact voltage detection		✓		
Peak measurement	Peak value storage		Peak value storage	RMS Peak value storage
Data hold	✓	✓	✓	✓
Jaw opening	26 mm	45 mm	50 mm	45 mm
Relative value	✓		✓	
Overvoltage category	CAT III/600 V	CAT III/600 V	CAT III/600 V	CAT III/600 V
Degree of protection	IP 50	IP 50	IP 50	IP 50
CE mark	✓	✓	✓	✓

